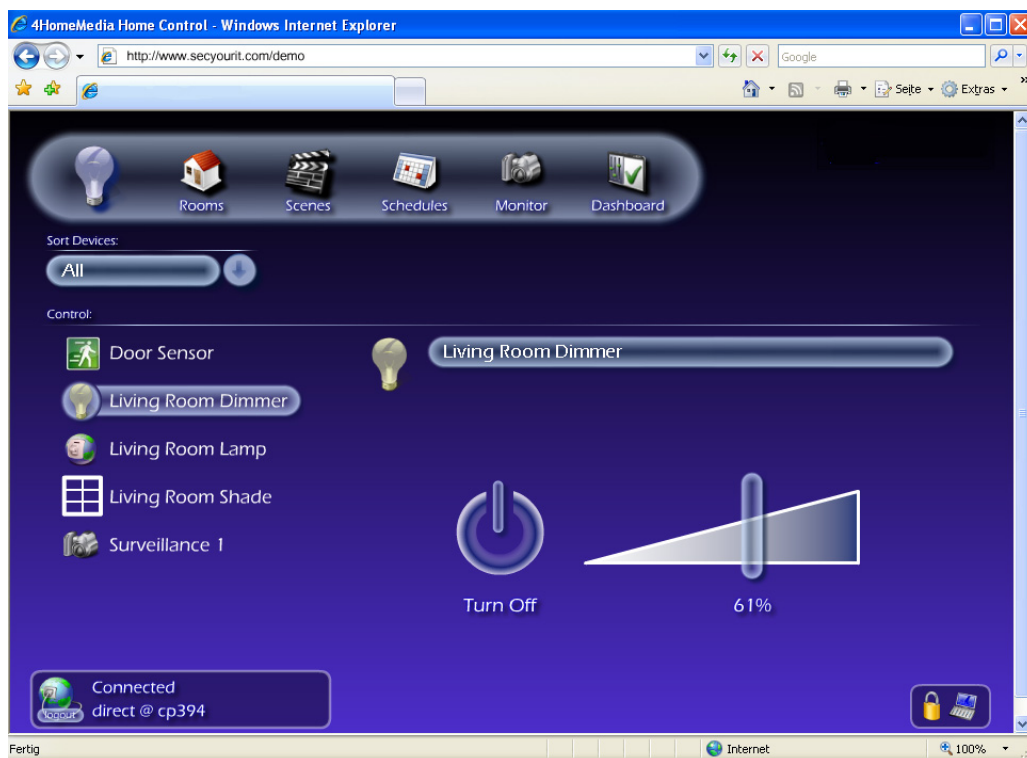


## SIENNA® Home

### for Home Automation and Remote Access

**SIENNA® Home** is a Web-Server with an embedded application for controlling all **SIENNA®** devices.

- The **SIENNA® Home** Controller is always on and can control **SIENNA®** devices without an attached PC. A PC with a web browser is required only for configuring the controller.
- Scenarios und Schedules can easily be configured using a web browser.
- All components can be controlled and monitored remotely using a PC or a mobile phone with a web interface.



### Technical Data:

<b>Processor</b>	RISC-CPU@400MHZ
<b>Network Interface</b>	1 x 10/100 Ethernet Port
<b>USB Port</b>	2 x USB.2.0
<b>Powerline Interface</b>	LonWorks Powerline
<b>Memory</b>	<b>SDRAM:</b> 64 MB; <b>FLASH:</b> 64 MB
<b>Console Access</b>	Ethernet (RJ45) with DHCP Server
<b>GUI</b>	Browser (PC, TV, mobile phone)
<b>Operating System</b>	Linux
<b>Network Properties</b>	DHCP client, HTTP server, VPN
<b>Applications</b>	Home Automation Framework, OSGi framework, Java Runtime Environment

**Product name: SRV-HOME-ST01-H01**  
**EAN number: 4260194736000**