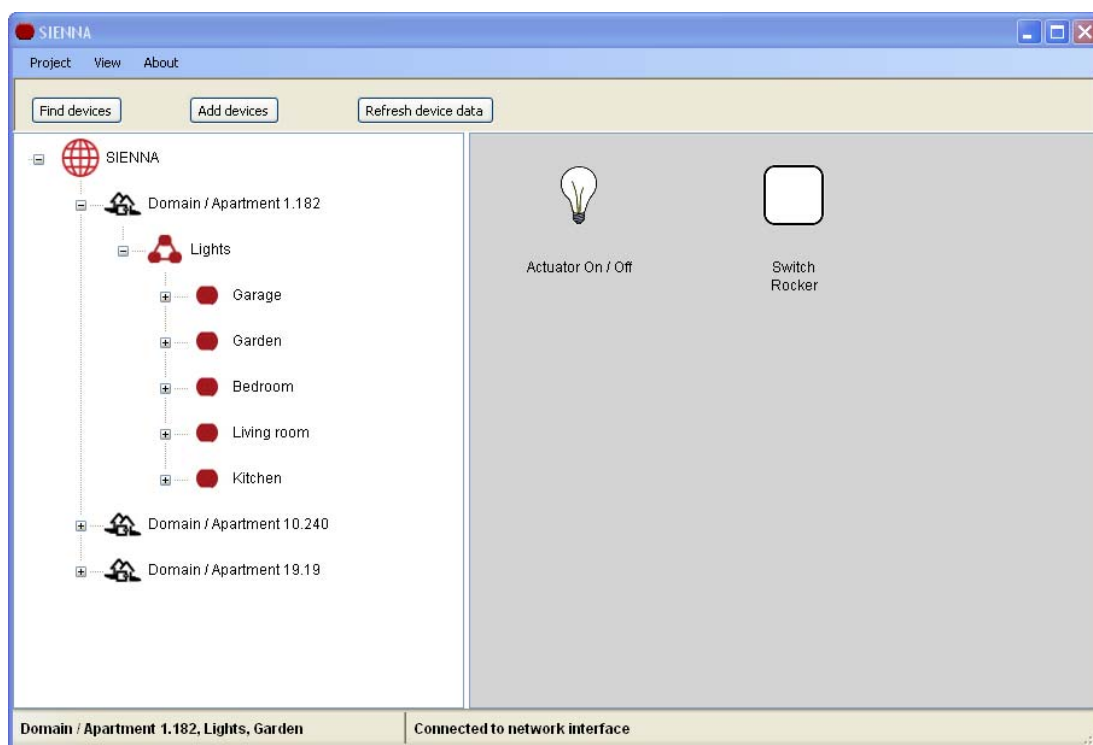


**SIENNA® Professional - PC based configuration tool**

The **SIENNA®** bus system consists of sensors and actors which use the in-house powerlines as a communication bus to control electrical devices.

**SIENNA® Professional** is a Windows program for installing and configuring all **SIENNA®** components. The PC based configuration can be used together with or as an alternative to the screwdriver based configuration. This tool makes it very simple to change the configuration or to retrieve existing installations with a PC or a laptop.

The USB port of the PC is used to couple to the communication bus i.e. the powerline. Any nearby power outlet can be used to access the powerline. The coupling element PC/power plug is included with the software package.



**Technical data, coupling element:**

- Technology:**..... Powerline communication in the B/C-Band (5kb/s) compliant with FCC, CENELEC EN50065-1 and LONWORKS® protocol.
- Bus Coupling:**..... Power plug, 230V~/50Hz.
- PC Coupling:** ..... USB 2.0.
- Operating Input Current:** ..... Power supply/Power plug: 250 mA maximum @ 18VDC.  
USB: 50 mA maximum @ 5VDC.
- Processor:** ..... Neuron processor integrated in the Powerline Smart Transceiver PL 3120.
- Operating Temperature:** ..... 0°C bis +70°C
- Safety Compliance:** ..... CE, EN55022 Class B, EN55024, ETSI300 019-2-3 T3.2, TÜV EN60950

**System Requirements, Laptop/PC:**

- Processor:** ..... Intel® Pentium® Processor
- O/S:**..... Windows XP Professional / Home Edition, Windows Vista
- Hard Disk Space:**..... 10 MB available space on hard disk.
- RAM:** ..... 64 MB RAM.
- Screen Resolution:** ..... 1024 x 768

**Product name: SW-PROF-ST01-H02**  
**EAN number: 4260194736048**